

# ScoutPro™

Osmolarity System

PORTABLE ♦ PRACTICAL ♦ PRECISE

## The Power of Osmolarity Testing in the Palm of Your Hand



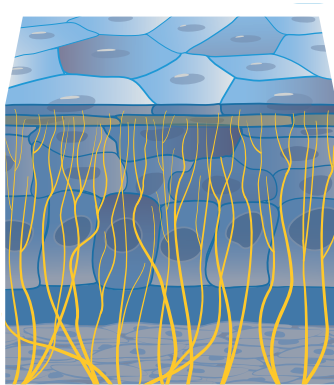
**Trukera™**  
MEDICAL

# Introducing the ScoutPro™

## Impact of osmolarity on the cornea

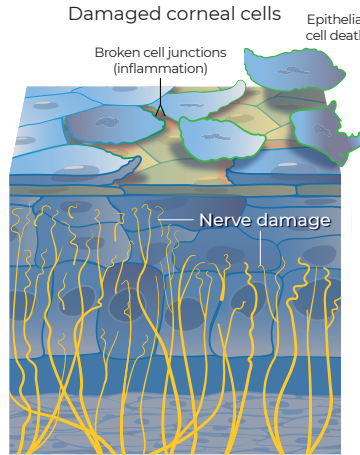
### Toxic hyperosmolarity damages corneal cells and drives refractive surprises

Low Osmolarity  
Healthy corneal cells



Corneal epithelium  
Bowman's layer  
Stroma

High Osmolarity  
Damaged corneal cells



Hyperosmolarity is a causative factor leading to an abnormal slit lamp exam<sup>1</sup>

**80%** of cataract patients are at risk for ocular surface disease<sup>2</sup>

**1 in 5** cataract patients with hyperosmolarity risk a >1D variation in keratometry measurements<sup>3</sup>

## ScoutPro is the first and only osmolarity system that is portable, practical, and precise\*

### Portable

Specimen collection and analysis in one

### Practical

Streamlined user experience

### Precise

Trusted precision, proven accuracy



▪ **VeriLyte™ Technology** integrates specimen collection and analysis all within the ScoutPro pen

▪ **LCD screen** displays results in seconds with memory for prior test results

▪ **Rechargeable AAA batteries** in pen hold charge for 8 hours

▪ **Charging base** has small footprint and optional wall mount

▪ **Test cards** are interchangeable with first-generation TearLab osmolarity system

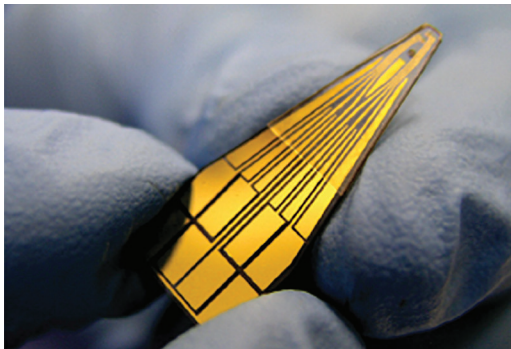
\*United States market claim.

## Portable: Specimen collection and analysis in one

VeriLyte™ Technology integrates specimen collection and analysis in a single device.

### Collection

Osmolarity test cards are interchangeable for use with either ScoutPro or the TearLab Osmolarity System.

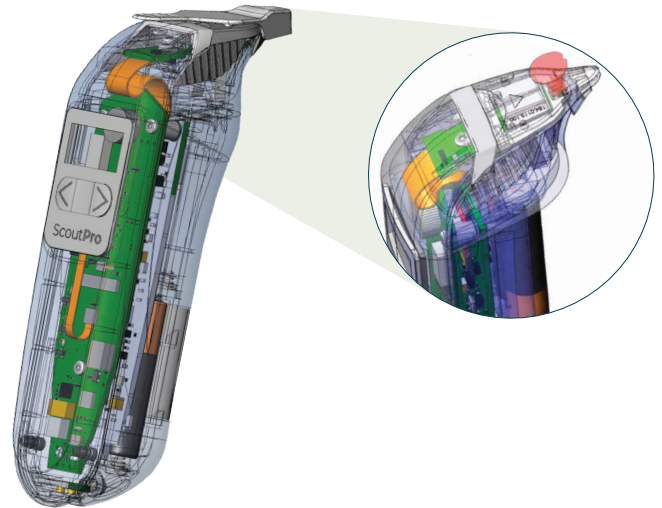


- Microfluidic lab-on-a-chip technology
- Innovative card design allows tear collection from the driest patient
- Allows nanoliter volume collection by any eye care professional

2 in 1

### Analysis

The thermometer is now integrated into the tip of the ScoutPro pen to maintain test performance even when ambient temperature varies throughout the office.



## Practical: Streamlined end-to-end testing process

A seamless end-to-end osmolarity testing method has been designed to meet the demands of today's busy eye care professionals.



- No more docking
- Real-time results appear on the pen display in seconds
- Recall up to 2 prior test results
- Small footprint with wall mount option
- Rechargeable AAA batteries

# ScoutPro™

Osmolarity System

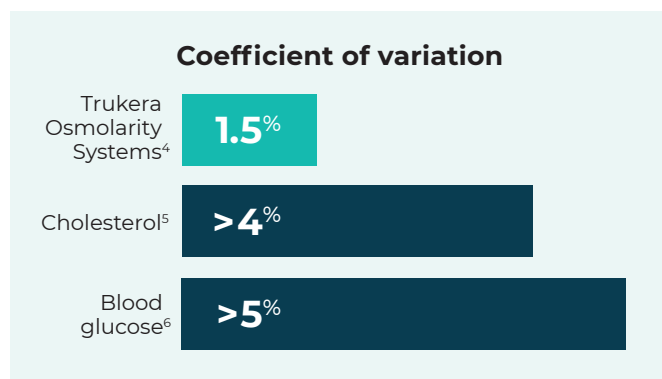
PORTABLE ♦ PRACTICAL ♦ PRECISE

## Precise: Trusted lab precision of 24 million tests

Based on over a decade of diagnostic testing for ocular surface disease, ScoutPro delivers trusted precision and proven accuracy.

### Trusted Precision

ScoutPro delivers precision testing superior to routine point-of-care tests for blood glucose and cholesterol.<sup>4</sup>



### Proven Accuracy

**95%** analytical accuracy compared to laboratory standard osmometer<sup>4</sup>

**Assured Accuracy = Assured Clinical Value<sup>7</sup>**

**“Increase in variability is an inherent biologic characteristic of the disease and is not due to the measurement technique.”<sup>7</sup>**

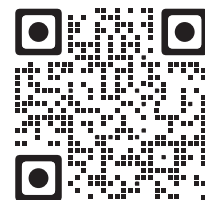
## Place the power in your hands today

Order your  
**ScoutPro  
Osmolarity  
System**

Email us today at  
[getstarted@trukera.com](mailto:getstarted@trukera.com)



Visit us at  
[www.GetScoutPro.com](http://www.GetScoutPro.com)



**REFERENCES:** **1.** Wolffsohn JS, et al. *Ocul Surf.* 2017;15(3):539-574. **2.** Gupta PK, et al. *J Cataract Refract Surg.* 2018; 44(9):1090-1096. **3.** Epitropoulos AT, et al. *J Cataract Refract Surg.* 2015;41:1672-1677. **4.** FDA K083184. CV: from within run CV@316mOsm/L; r<sup>2</sup> from external method comparison. **5.** Volles DF, et al. *Pharmacotherapy.* 1998;18(1):184-92. **6.** Kimberly MM, et al. *Clin Chim Acta.* 2006;364(1-2):292-7. **7.** Keech A, et al. *Curr Eye Res.* 2013;38(4):428-436.

© 2022 TearLab Corp. 920379 Rev A

**Trukera™**  
MEDICAL